



ASPIRE

— TO MOVE —



Mulberry Park



Kellaway Lane, Combe Down, Bath, BA2

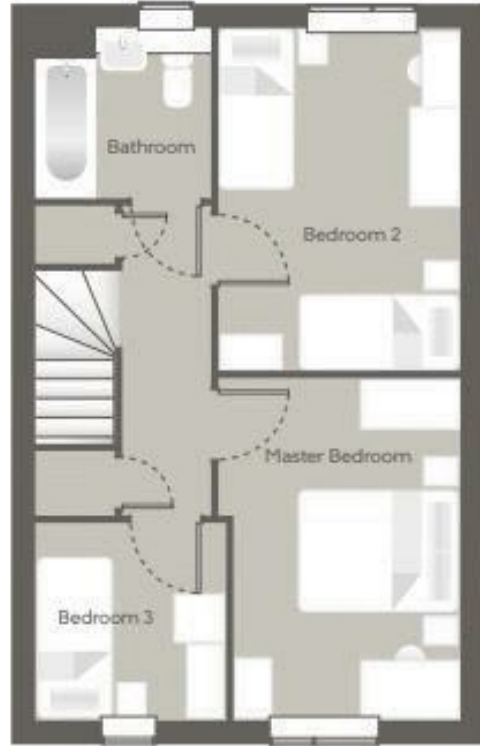
Video and physical viewings available. Offered unfurnished and available from the 15th August 2026.

Mulberry Park is an award winning development situated in Combe Down. Amenities include a primary school, children's nursery and state-of-the-art leisure facilities, There is also an onsite community Hub offering yoga and pilates classes alongside a cafe.

£1,900 Per month

- Three-bedroom family home
- Mulberry Park Estate
- Private rear garden
- Holding deposit - £438.00
- Available August 2026
- Easy access to Bath city centre
- Excellent location close to schools, amenities and transport links
- Allocated parking
- Council tax band D

Floor Plans



CAMBRIDGE

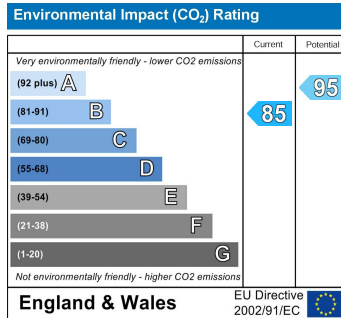
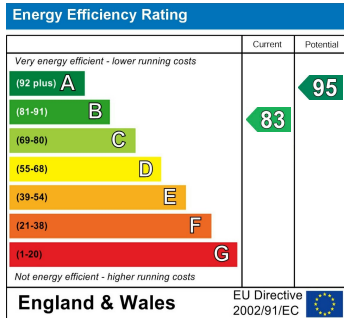
GROUND FLOOR

Kitchen/Dining	3590 x 3620mm	11' 9" x 11' 10"
Living Room	4026 x 4628mm	13' 6" x 15' 2"

FIRST FLOOR

Master Bedroom	2767 x 4150mm	9' 1" x 13' 7"
Bedroom 2	2940 x 4655mm	9' 7" x 15' 7"
Bedroom 3	2439 x 2400mm	8' 0" x 7' 10"

Energy Performance Graph



These particulars, whilst believed to be accurate are set out as a general outline only for guidance and do not constitute any part of an offer or contract. Intending purchasers should not rely on them as statements of representation of fact, but must satisfy themselves by inspection or otherwise as to their accuracy. No person in this firm's employment has the authority to make or give any representation or warranty in respect of the property.